



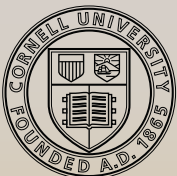
SMALL GROUP
**MAXIMUM OF
28 TRAVELERS**



Paris

Art, Culture & People

SPONSORED BY



**Cornell Alumni Association
Travel Program**

April 29 – May 7, 2018



A World Apart

The story of travel involves more than a ticket and a passport. It should weave together discovery, education and humanity, the best elements of any compelling tale. Your personal travel story begins with our commitment to delivering authentic experiences with local people.

The incomparable value of your journey lies in the personalized care you receive from your Travel Director and the knowledge you gain from expert guides and lecturers, who call this area home.

By eliminating logistical worries, your multilingual Travel Director allows you to immerse yourself comfortably in your surroundings. This high-caliber professional makes you feel safe and important by creating a convivial, welcoming atmosphere.

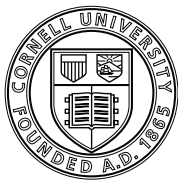
The other important characters in this story are the guides and lecturers, whose regional expertise shines in their insider perspective and commentary.

Take time to stroll Paris' intimate quarters, chat with neighborhood shopkeepers and unwind in tranquil gardens and churchyards, and you'll come to know the city's soul.

Inspiring Moments

- Explore **Le Marais**, a historic neighborhood that is a modern-day favorite of Parisians and travelers alike.
- Nibble on treats during a **gastronomic walking tour**, featuring locally owned artisanal food shops.
- See the sun dip behind Paris' most beautiful landmarks during a late afternoon **cruise on the Seine**.
- Visit the city of **Dijon** and enjoy **lunch at a lovely historic mansion**.
- Gaze at **celebrated works of art and priceless antiquities** in Paris' famous museums with a two-day pass.

*Above: Cruising by Notre-Dame Cathedral |
Cover photo: Eiffel Tower*



Dear Alumni, Parents, and Friends,

We invite you to be among the thousands of Cornell alumni, parents and friends who view the Cornell Alumni Association (CAA) Travel Program as their first choice for memorable travel adventures.

If you've travelled with CAA before, you know to expect excellent travel experiences in some of the world's most interesting places. If our travel offerings are new to you, you'll want to take a closer look at our upcoming tours.

Working closely with some of the world's most highly-respected travel companies, CAA trips are not only well organized, safe, and a great value, they are filled with remarkable people. This year, as we have for more than forty years, are offering itineraries in the United States and around the globe.

Whether you're ascending a sand dune by camel, strolling the cobbled streets of a 'medieval town', hiking a trail on a remote mountain pass, or lounging poolside on one of our luxury cruises, we guarantee *an extraordinary journey in great company*.

And that's the reason so many Cornellians return, year after year, to travel with the Cornell Alumni Association. If you, like me, simply can't wait for your next travel adventure, I encourage you to register today for this or another of our remarkable travel offerings.

Warmly,

James A. Mazza '88
Associate Vice President for Alumni Affairs
Cornell University

800-323-7373

corn.ahitravel.com



Hôtel de Ville, Paris' City Hall, Le Marais





Musée du Louvre

UNESCO World Heritage

Paris, Banks of the Seine, is the World Heritage site featured in this program.

Welcome to Paris, a city that will tantalize your senses. Feast your eyes on iconic landmarks, hear church bells chime, breathe in the tempting aroma of fresh bread baking in neighborhood boulangeries, nibble airy macarons and feel the breeze tousle your hair during a Seine River cruise. Expert lecturers and guides will help you make the most of every moment, from introducing you to Paris' famed culinary scene to helping you navigate renowned art collections.

Day One

In Transit

Depart for Paris, France.✈

Day Two

Paris, France

Upon arrival, transfer✈ to the Hotel l'Echiquier Opéra Paris.

Discovery: Welcome to Paris. Orient yourself with the neighborhood around your hotel on a walking tour and get a briefing on the Métro, Paris' famous subway system, from your Travel Director.



ACTIVE TRAVEL for CULTURAL EXPLORERS

Immersion Programs are moderately paced with a good balance of included activities and excursions and time to explore on your own. Travelers should be physically fit, able to walk distances of up to 3 miles, exit and enter trains quickly and navigate stairs, hills and uneven terrain.

Gather for a Welcome Reception and Dinner.

Day Three

B

Paris

Enrichment: *The History of Paris.*

Discover Paris' rich past before venturing into the city.

Discovery: Le Marais. Explore the heart of artistic and cultural life in Paris in this trendy, yet intimate, neighborhood. Marais means "marsh," but this neighborhood is much more elegant than its name.

Free Time: Enjoy some time exploring on your own. Continue exploring Le Marais and stroll through the narrow lanes built during the Middle Ages. Browse through art galleries and stylish boutiques or stroll through Place des Vosges, Paris' first square.

Discovery: Paris by Boat. Cruise the Seine River for a different perspective of Paris. Float past Notre-Dame Cathedral, Île Saint-Louis, the Louvre Museum and French Institute.

Day Four

B

Paris

Discovery: Flavors of France. Step into the world of French gastronomy. Discover several of the city's best artisan-made foods as a knowledgeable guide leads the way.

Free Time: Enjoy the rest of the day at leisure. Paris is filled with historic landmarks, world-class shopping, museums and more!



Sacré-Cœur and Montmartre



Garnier Opéra House



Versailles

Don't miss the opportunity to go to the top of the Eiffel Tower for the best view of the city.

Day Five

B | L

Dijon

Discovery: *Dijon.* Take the high-speed train to this ancient Roman city, which continues to blossom with each passing age. Explore the Old Town, and visit the fine arts museum in the former Palace of the Dukes. Pass by the archaeology museum, which sits inside an ancient monastery, and the Maille mustard shop, which sells the city's famous condiment. Enjoy lunch at Hôtel Malateste, and enjoy a tour of this beautiful, historic home.

Free Time: Enjoy some time in Dijon, capital of the Burgundy region, on your own. Visit one of the museums or visit a wine shop to buy a bottle of one of the famous regional wines to enjoy some evening during your trip or even to bring home.

Day Six

B

Paris

Enrichment: *Treasures of the Louvre.*

Learn about the collections at the Louvre Museum and decide what areas of the museum you would like to see with your two-day Paris Museum Pass.

Free Time: Visit the Louvre at your leisure with your Museum Pass. The museum has several restaurants, so you may take a break for lunch and then continue to explore the galleries. When you are done, see more of the city. See the Latin Quarter, so named because



Clock, Musée d'Orsay

this has been the intellectual hub of Paris for centuries. The Sorbonne, Paris' famous university is nearby, and the streets are lined with bookstores and cafés. Stroll through the Luxembourg Gardens, a classic French garden, or the abbey of Saint-Germain-des-Prés, the oldest church in the city. If you choose, you may join the Elective Activity being offered today.

ELECTIVE | Versailles. See France's grandest palace on a guided tour. Versailles was France's political capital and seat of the royal court from 1682-1789. The Treaty of Versailles, which signaled the end of World War I, was signed in the famed Hall of Mirrors.

Day Seven

B

Paris

Enrichment: *Treasures of the d'Orsay.*

The Musée d'Orsay features French art of the



Old Town, Dijon

1800s and early 1900s, including works by Degas, Monet, Renoir, Cézanne and other noted artists. Enjoy an expert overview of the museum and the impressionist movement.

Free Time: Your Museum Pass includes entrance into the d'Orsay Museum. You may wish to stay and explore the museum today.

Day Eight B | D

Paris

Discovery: *Garnier Opéra House.* Step into the Garnier Opéra House, which inspired "The Phantom of the Opera." See the ceiling painted by Chagall, Edgar Degas' paintings and more.

Free Time: Enjoy your final afternoon in Paris at leisure.

Join your fellow travelers for a special Farewell Reception and Dinner.

Day Nine B

In Transit

After breakfast, transfer✈ to the airport for the return flight to your gateway city.

Note: *Itinerary may change due to local conditions. Walking is required on many excursions, and surfaces may be uneven or unpaved.*

✈ Provided for AHI FlexAir participants

B|L|D denotes included breakfasts, lunches and dinners.

🕒 Elective Experiences are available at an additional cost.

ACCOMMODATIONS

(With baggage handling.)

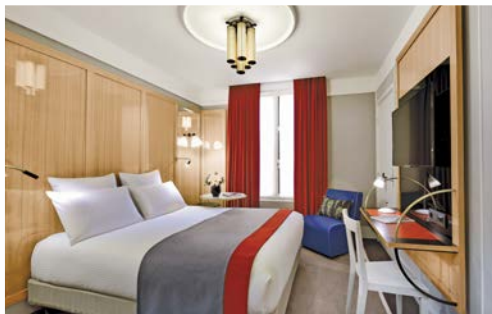
- Seven nights in Paris, France, at the first-class Hotel L'Echiquier Opéra Paris.

EXTENSIVE MEAL PROGRAM

- Seven breakfasts, one lunch and two dinners, including Welcome and Farewell Dinners; tea or coffee with all meals, plus wine with dinner.
- Sample authentic regional specialties during meals at local restaurants.

YOUR ONE-OF-A-KIND JOURNEY

- Expert-led **Enrichment programs** enhance your insight into the region.
- **Discovery excursions** highlight the local culture, heritage and history:
 - Explore Le Marais.
 - See the highlights of Paris during an afternoon Seine River cruise.
 - Taste the authentic flavors of France during an artisanal culinary tour.
 - Visit the Burgundian town of Dijon.
 - Step inside the opulent Garnier Opéra House.
- A two-day Paris Museum Pass, which allows you to bypass long entry lines at more than 50 museums, including the Louvre and d'Orsay museums.
- Ten-ticket Métro package for included excursions.
- Welcome and Farewell Receptions to mingle with fellow travelers.
- Clearly hear your English-speaking guide with your VOX headset.
- Tipping of guides and drivers.
- Complimentary travel mementos.



AHI TRAVEL EXPERTISE

From your reservation to your return home, we are here to ensure you have the adventure of a lifetime.

Before you go:

- ▶ **Travel Consultants** | These experts stand ready to answer your questions about activities, meals, accommodations and more as they guide you through the reservation process.
- ▶ **Passenger Service Representative** | Once you have reserved your spot, enjoy personalized assistance from this specialist, your one point of contact who will help you with everything from arranging flights to booking elective activities to fulfilling special requests.
- ▶ **Travel Information** | Receive extensive destination information and travel tips compiled by our travel-savvy team to prepare you fully for your journey.

Once you arrive:

On the ground, three layers of top-quality professionals offer their insiders' perspective. From suggesting the best café or pub to sharing a laugh over the stories of the day, our dedicated team takes your adventure to the next level.

- ▶ **Travel Director** | Throughout your journey, you will be in the care of a seasoned AHI travel professional who will manage all the logistics, allowing you to relax and simply soak up the ambience. Resourceful, knowledgeable and attentive, your Travel Director helps to ensure you enjoy an unforgettable travel experience.
- ▶ **Expert Guides** | Who better to show you around than the people who live there? We've specially selected informed and enthusiastic local professional guides who understand the needs of our educated and curious travelers. Warm and genuine, they're ready to share their passion for their country with you.
- ▶ **Lecturers** | Coming from all walks of life, our entertaining local lecturers open your eyes to history and current events. The breadth of their knowledge deepens your appreciation for the region and its heritage.



HOTEL L'ÉCHIQUIER OPÉRA PARIS | PARIS



Enjoy accommodations in the heart of the city. Our travel experts have carefully selected this first-class property for its prime location. It is ideally located for exploring the city's renowned landmarks, while providing opportunities to immerse yourself in local life. Of utmost importance is the quality of the services, amenities and accommodations, allowing you to fully enjoy your stay.

Reserve your Paris trip today!

Trip #:4-23612W

Send to Paris ~ Art, Culture & People

Cornell Alumni Association Travel Program

c/o AHI Travel

International Tower-Suite 600

8550 W. Bryn Mawr Avenue

Chicago, IL 60631

Please contact AHI Travel at **800-323-7373** with questions regarding this trip or to make a reservation.

Full Legal Name (exactly as it appears on passport)

1) _____
Title First Middle Last Date of Birth

Email: _____

2) _____
Title First Middle Last Date of Birth

Email: _____

Street Address: _____

City: _____

State: _____ ZIP: _____

Home: (_____) _____ Cell: (_____) _____

Sharing with _____ (Form sent separately)

I/we authorize you to make my/our reservations as follows:

Land Program and AHI FlexAir

☐ I/we reserve the Land Program and request the round-trip AHI FlexAir to Paris, France, to depart from:

Departure City

☐ Please contact me regarding air options.

☐ Please send me information on upgrading my flights.

Land Program

☐ I/we will make my/our own air arrangements and transfers.

Single Accommodations

☐ I prefer single accommodations at an additional \$745 (limited availability).

☐ I request assistance in securing a roommate but will accept a single, if one is available at this time, and pay the single supplement. Should a roommate be found, I understand the supplement will no longer apply.

Reservations are subject to availability and processed on a first-come, first-served basis. Reservations to be paid in full by **February 13, 2018** (75 days prior to departure). Reservations received after this date must be accompanied by payment in full. Final payment may be made by personal check, MasterCard, Visa, Discover or Amex. Make checks payable to AHI Travel.

Enclosed is a deposit of _____ (\$600 pp required) to reserve _____ place(s).

☐ Accept my check made payable to **AHI Travel**.

☐ Charge my: ☐ MasterCard ☐ Visa ☐ Discover ☐ Amex

Card # _____

Expires _____ / _____

(Signature as it appears on credit card)

Please note: Any payment to AHI Travel constitutes your acceptance of the terms and conditions set out herein, including but not limited to the cancellation terms.

If you are interested in making independent travel arrangements before and/or after this program, please contact **AHI Travel at 800-323-7373** no later than 60 days prior to departure and they will be happy to assist you with your reservations.

A nonrefundable service fee and additional air/land charges based on reservations apply.

PROGRAM DATES

Air Program dates: April 29 – May 7, 2018

Land Program dates: April 30 – May 7, 2018

LAND PROGRAM

Full Price	Special Savings	Special Price*
\$3,245	\$250	\$2,995

*Special Price valid if booked by the date found on the address panel.

VAT is an additional \$295 per person.

All prices quoted are per person, based on double occupancy (unless otherwise stated).

Single accommodations are an additional \$745 (limited availability).

Let us arrange your flights!

✈️ **AHI FlexAir** | Our experts are ready to assist you in booking flights. Our personalized air program offers the following advantages:

- ▶ **price guarantee** to protect you from fuel surcharge increases after ticket purchase
- ▶ arrival and departure **transfers** on most flights
- ▶ **flexibility** to change or cancel your reservations without penalty up to 60 days before departure on most flights
- ▶ **assistance** in the event of schedule changes or delays
- ▶ flight insurance worth up to \$250,000, subject to policy terms

Travel stress-free with AHI FlexAir.



Flavors of France

ULTIMATE FLEXIBILITY-The AHI Travel Passenger Protection Plan offers an **Any Reason Cancellation** feature. Don't worry! Travel happily!
NOT INCLUDED-Fees for passports and, if applicable, visas, entry/departure fees; personal gratuities; laundry and dry cleaning; excursions, wines, liquors, mineral waters and meals not mentioned in this brochure under included features; travel insurance; all items of a strictly personal nature.
MOBILITY AND FITNESS TO TRAVEL-The right is retained to decline to accept or to retain any person as a member of this trip who, in the opinion of AHI Travel is unfit for travel or whose physical or mental condition may constitute a danger to themselves or to others on the trip, subject only to the requirement that the portion of the total amount paid which corresponds to the unused services and accommodations be refunded. Passengers requiring special assistance, including without limitation those who permanently or periodically use a wheelchair, must be accompanied by someone who is fit and able to assist them, and who will be totally responsible for providing all required assistance.
AIR TRANSPORTATION-The price of air transportation offered by AHI Travel is based on Advance Purchase Excursion fares. After tickets are issued, penalties up to 100% of the ticket price may be levied. If connecting flights are requested, special promotional fares may be used, in which case penalties of as much as 100% may be assessed by the airlines if reservations are changed or canceled after ticketing. After departure, if the reservations are changed, you will be charged the higher, all year Economy class fare. **VARIATIONS TO THE GROUP ITINERARY MUST BE REQUESTED NO LATER THAN 60 DAYS PRIOR TO DEPARTURE.** Passengers who choose to make their own airline reservations independently will be wholly responsible for arrival and departure transfers, and any airline fees or penalties incurred as a result of program cancellation and/or change in travel dates, or airline schedule(s).
BAGGAGE-Baggage restrictions vary according to the airline policy and the class of service flown. Details will be provided with your pre-departure information. Baggage allowances are subject to change by the carrier without notice. Excess baggage charges for additional or oversized/overweight pieces are expensive and not included in your trip price; plan your wardrobe accordingly. Transport of baggage and personal effects is at the owner's risk throughout the travel program.
AUTHORITY TO USE IMAGES AND AUDIO RECORDINGS-On occasion, AHI Travel obtains, from its staff, or from trip participants, photographic or video images of passengers and trip activities. By participating in this travel program, you authorize AHI Travel, without providing compensation to you, or obtaining additional approvals from you, to include photographic and video recordings of you, as well as voice recordings included with any videos, in AHI Travel's sales, marketing, advertising, publicity and/or training activities.
RESPONSIBILITY-AHI Travel and the Sponsoring Association do not own or operate any entity which provides goods or services for this program, and act only as agents for the independent suppliers of travel conveyance, transport, accommodations or other services. All such persons or entities are independent contractors. As a result, AHI Travel and the Sponsoring Association are not liable for any negligence or willful act of any such person or entity or any third person. In addition and without limitation, AHI Travel and the Sponsoring Association are not responsible for any delays, delayed departure or arrival, missed carrier connections, loss, death, damage or injury to person or property or accident, mechanical defect, failure or negligence of any nature howsoever caused in connection with any accommodations, transportation or other services or for any substitution of hotels or of common carrier equipment, with or without notice, or for any additional expenses occasioned thereby. Dates, Program Details and Tour costs, although given in good faith and based on tariffs, exchange rates and other information current at the time of printing, are subject to change at or before the time of departure. No revisions of the printed itinerary or its included features are anticipated; however, the right is reserved to make any changes, with or without notice, that might become necessary, with the mutual understanding that any additional expenses will be paid by the individual passenger. Baggage and personal effects are the sole responsibility of the owners at all times. If the entire program is canceled for any reason, participants shall have no claim other than for a full refund. By forwarding the deposit, the passenger certifies that he/she has no physical, mental or other condition of disability that would create a hazard for himself/herself or other passengers and accepts the terms of this contract set out herein and in more specific pre-departure passenger information. The airlines and other transportation companies concerned are not to be held responsible for any act, omission, or event, during the time passengers are not on board their conveyances. The passage contract in use, when issued, shall constitute the sole contract between the company(ies) and the passenger and/or purchaser of this trip.
CANCELLATION-All cancellations for any reason will be subject to a \$250 per person administrative fee. You may choose, at the time of cancellation, to apply the withheld administrative fee to a future AHI Travel program that will operate in the current calendar year or year following. Cancellation from 120 days to 76 days prior to departure will result in forfeiture of 10% of the entire cost of the trip per person; 75-30 days, 50% of the trip cost per person; cancellation from 29 days up to the time of departure will result in 100% forfeiture of the entire cost of the trip. **TRIP CANCELLATION INSURANCE IS AVAILABLE. AN APPLICATION WILL BE SENT AFTER YOU RESERVE.** All cancellations must be submitted in writing to AHI Travel. **CANCELLATION OF TRIP OPTIONS**-Purchases of optional excursions, trip extensions and additional hotel nights become fully non-refundable 45 days prior to departure. Air transportation and private transfer purchases are subject only to penalties assessed by the airlines and transfer suppliers.

All prices listed are in USD. Special offers, promotions and discounts cannot be combined. CST Registration No. 2028271-20. Fla. Seller of Travel Reg. No. ST-33300
Iowa Seller of Travel No. 520 Ohio Seller of Travel Reg. No. 8889139. Washington State Seller of Travel Reg. No. 601-820-781. PARTICIPATING AIRLINES-all IATA and ARC Member Carriers ©2017 AHI Travel Printed in the USA.

800-323-7373

corn.ahitravel.com



Cornell Alumni Association Travel Program
Office of Alumni Affairs
130 E Seneca Street, Suite 400
Ithaca, NY 14850-4353

FRAPART18 50

800-323-7373
corn.ahitravel.com

**Please call or refer to our
website for the most current
program information,
discounts and pricing.**

AHI Travel's mission is to deliver
inspirational educational and cultural
travel programs that delight travelers.

With AHI you can rely on:

- Experienced Travel Directors who
attend to every detail of your journey.
- An exceptional travel value.
- Unique access to local sites.
- Flexibility and
customization.
- Safety and security.



Discover the best of Paris and more on a weeklong adventure!

Presorted Std.
U.S. Postage
Paid
AHI Travel

**ACTIVE
TRAVEL**
for CULTURAL
EXPLORERS

