

Cornell University



12 in

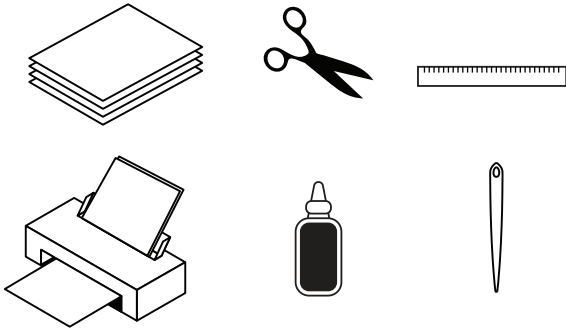
Touchdown Toy Bear

Pattern prints on 14 Pages

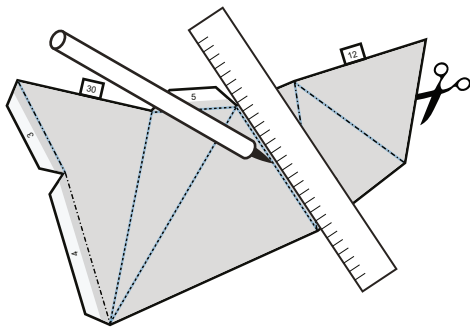
DESIGN BY LAPASTUDIOS.COM

How to

What you need:



- A4 / US letter paper or cardstock
Recommended paper thickness:
120gsm - 160gsm
- Printer
- Scissors or cutter
- Craft glue
- Folding bone or thick needle
- Ruler

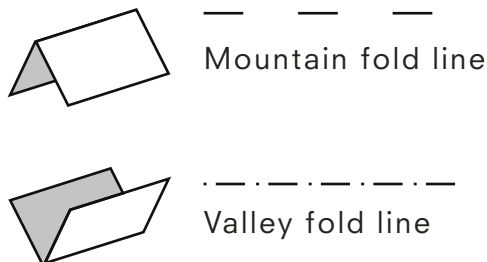


Note: the dashed lines are folding lines, make sure not to cut them!

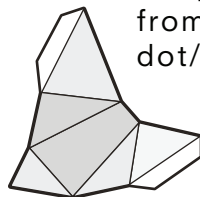
1. Print, Cut & Score

- Set the print settings to **'High Quality'**.
- Print the pattern.
- Cut the pattern pieces along the outer edge.
- Using a folding bone or a thick sewing needle and a ruler, score along the folding lines (illustrated in blue) so you can easily fold the pieces.

2. Fold

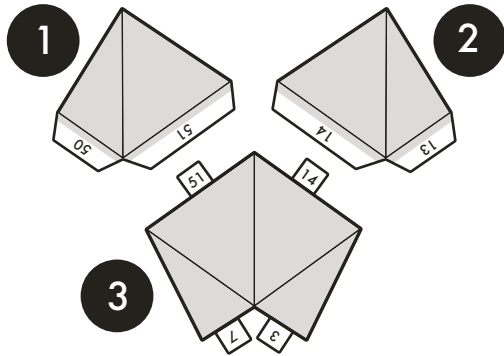


Refer to the diagram and fold along the creases, either bringing the two edges towards you (Valley Fold) for the plain dashed line folds or away from you (Mountain Fold) for the dot/dashed line folds.



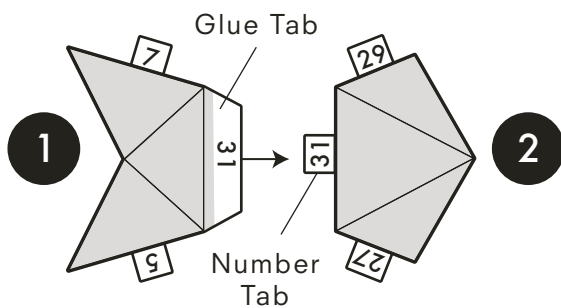
The weight [GSM] of the cardstock is our recommendation, but any other thickness will work too.

Assembly Instructions



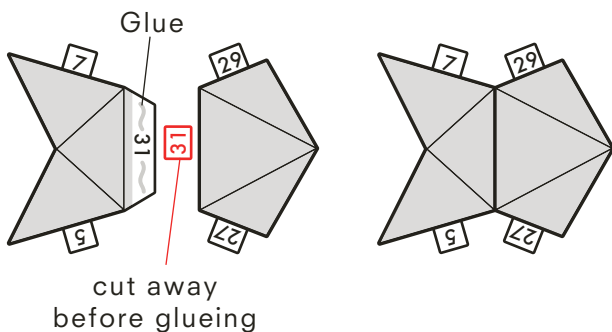
3. Lay out the pieces

Each piece has a label. Place the pieces in numerical order.



4. Find matching pieces

Start with piece 1 and piece 2. Each has small numbers either on a **glue tab** or a **number tab** along its edges. A number from piece 1 will be an exact match with a number from piece 2. Locate the glue tab below one of the matching numbers.



2. Glue

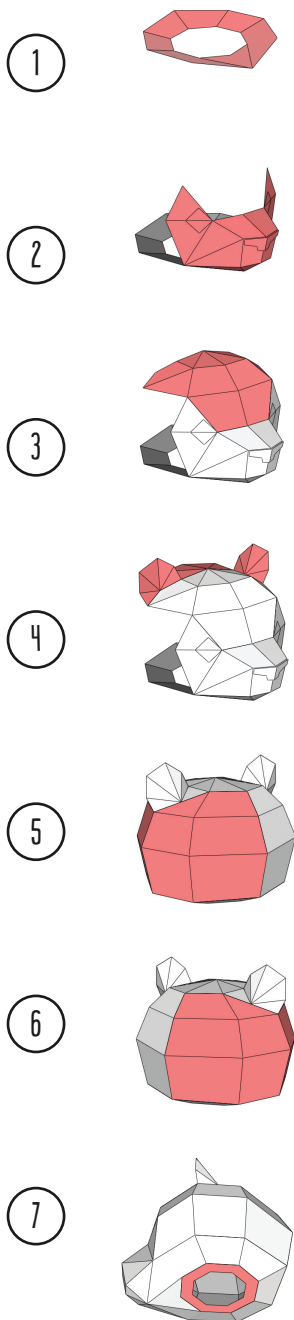
A thin strip is all you need on the glue tab. Press the glue tab firmly to the edge. Continue this process for each piece. The glue tab and number should not be visible from the outside of the sculpture. Cut away the number tab before gluing the pieces together.

Note: Before gluing, cut away the number tab on the corresponding side.

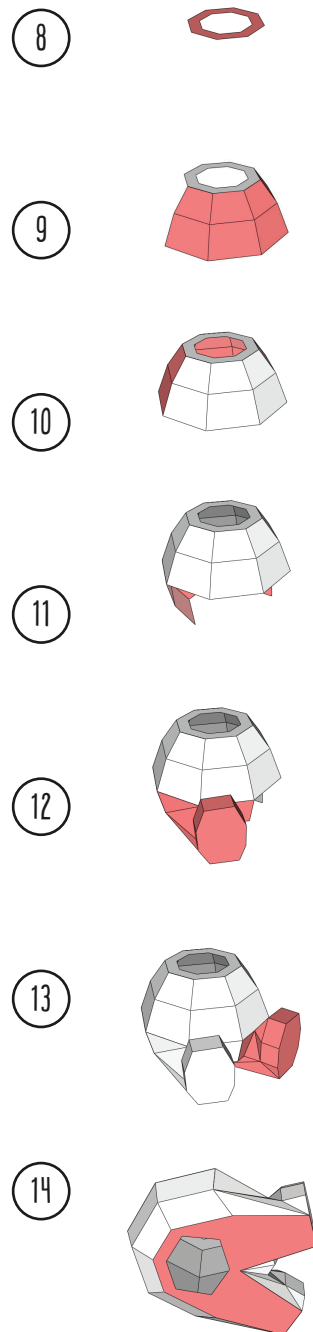
Order of assembly

Follow the instructions on this page and assemble the sculpture step by step in this order. Each pattern piece is labeled with it's unique number.

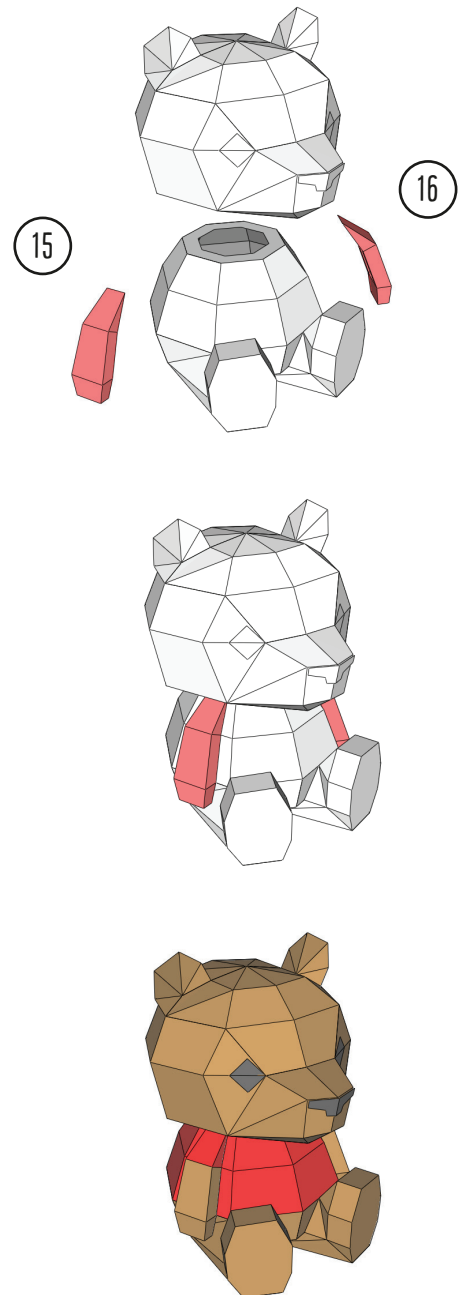
1. Head

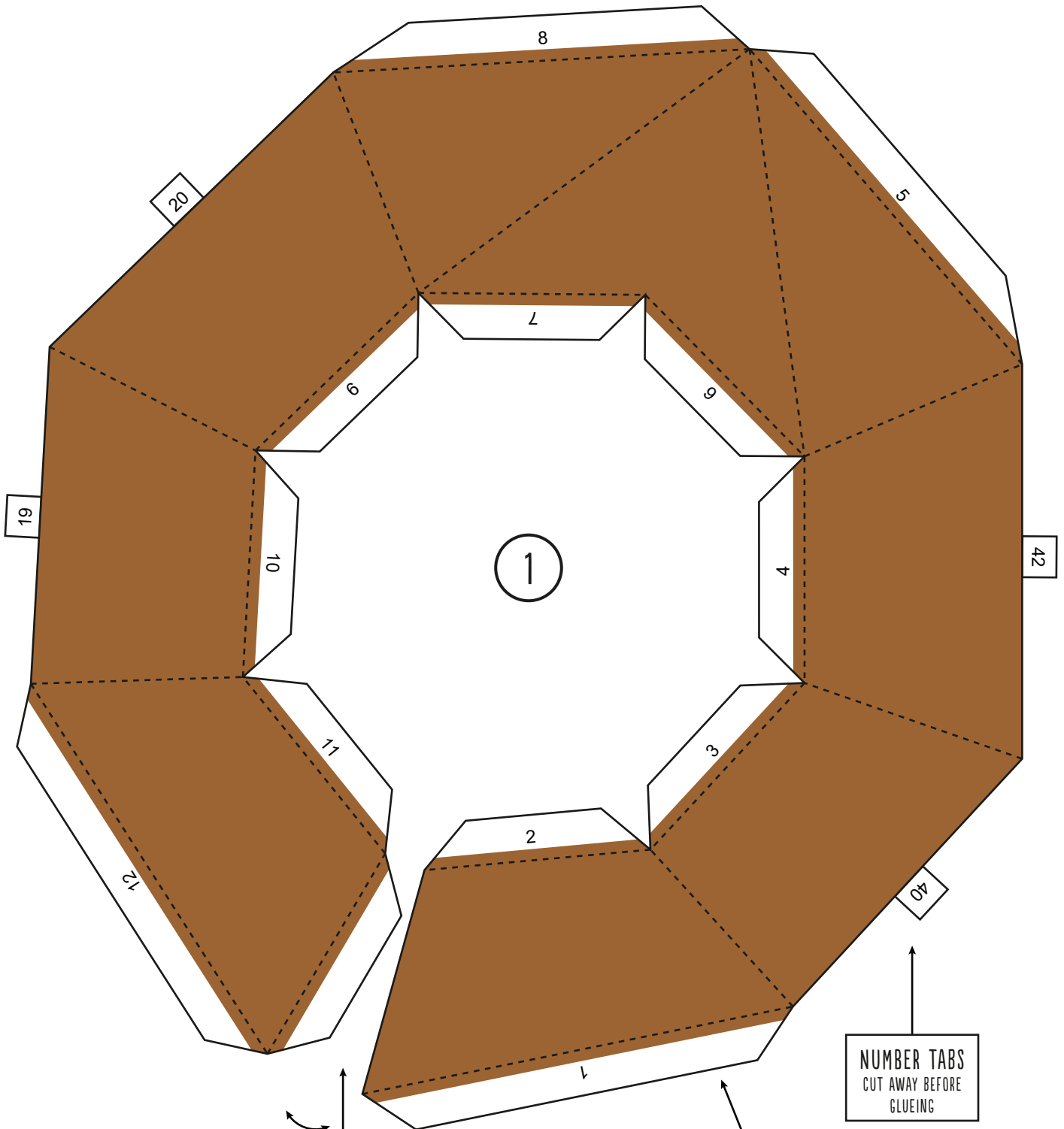


2. Body



3. Arms

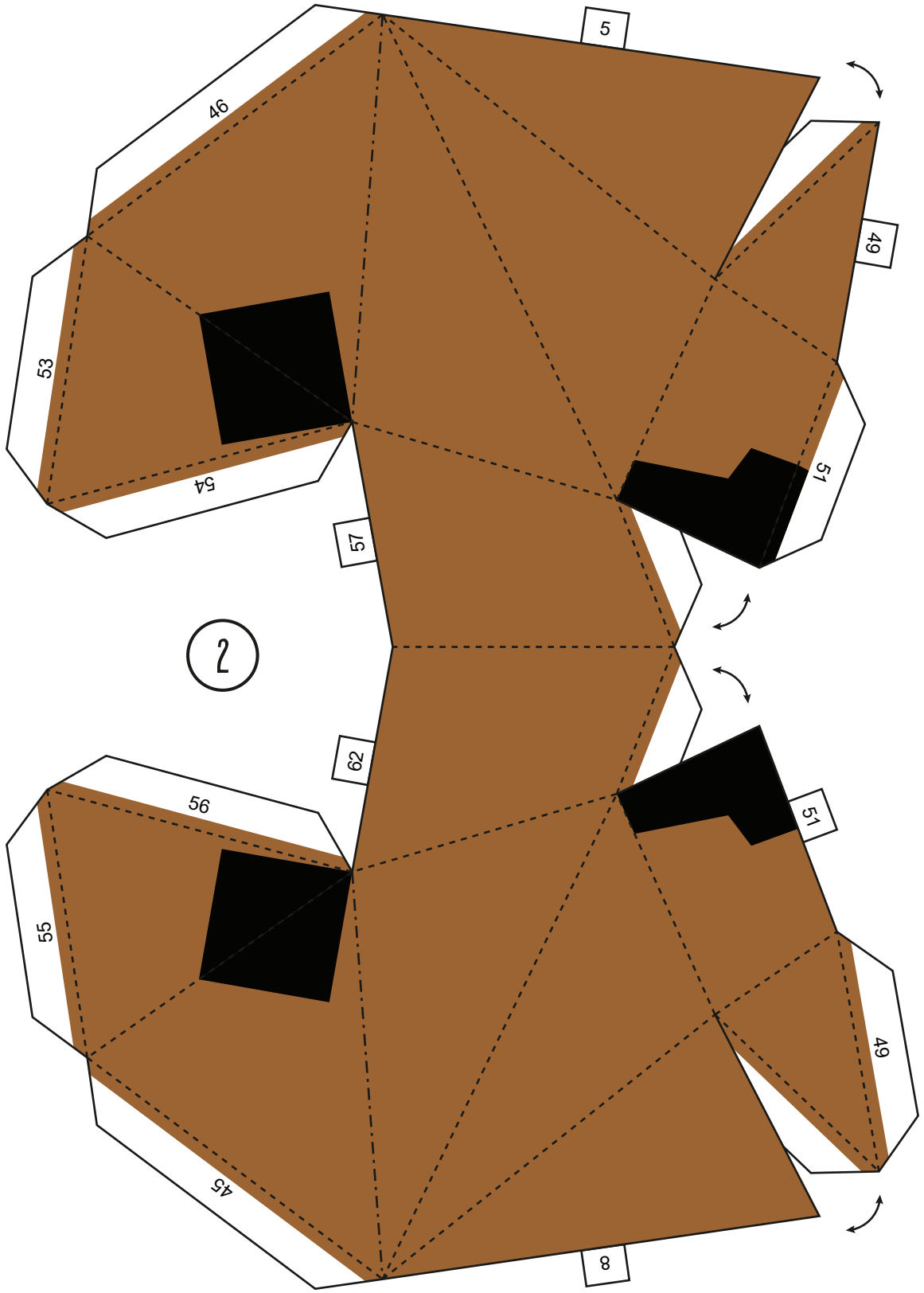


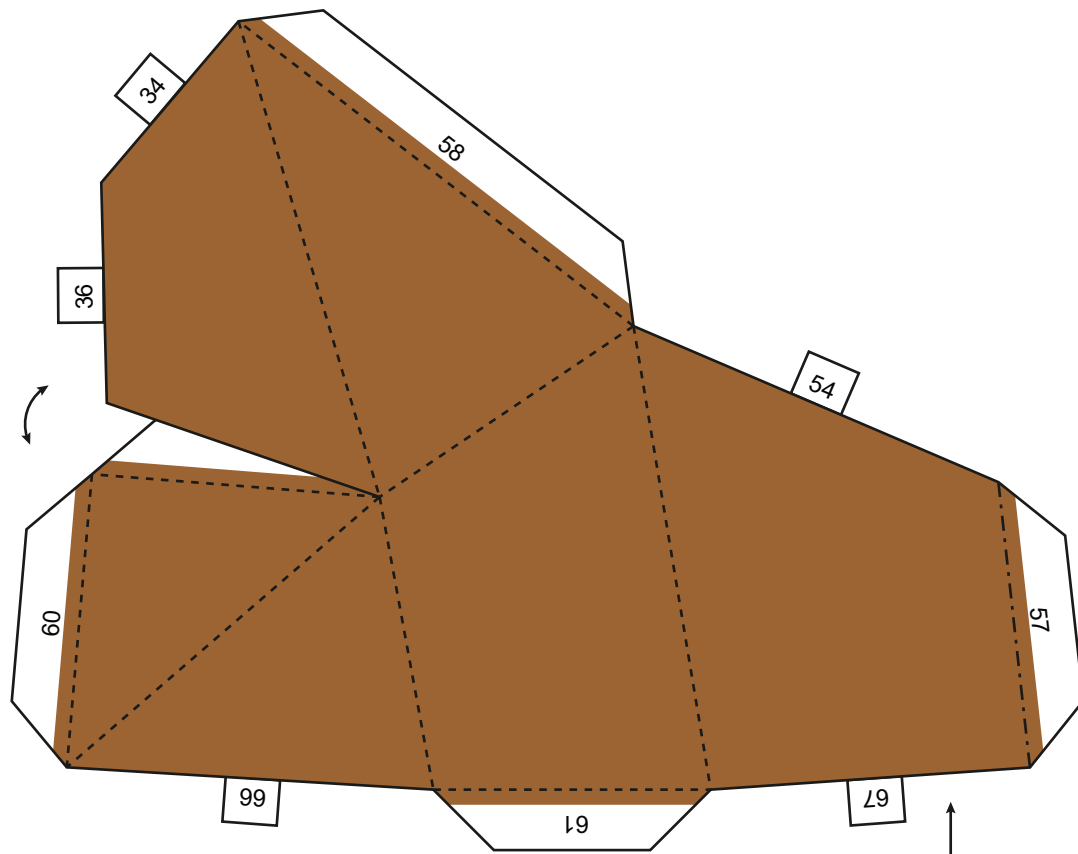


IF THERE ARE NO NUMBERS
GLUE TOGETHER THE
CORRESPONDING SIDES

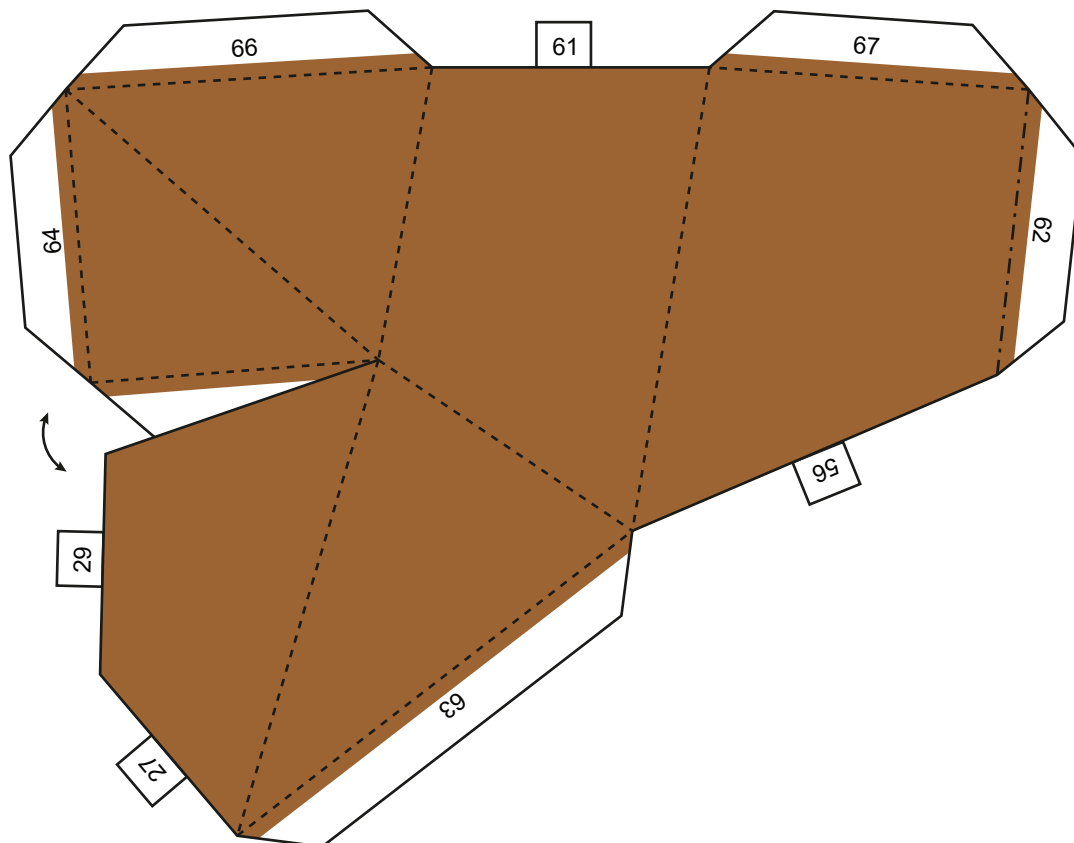
GLUE FLAPS

NUMBER TABS
CUT AWAY BEFORE
GLUEING

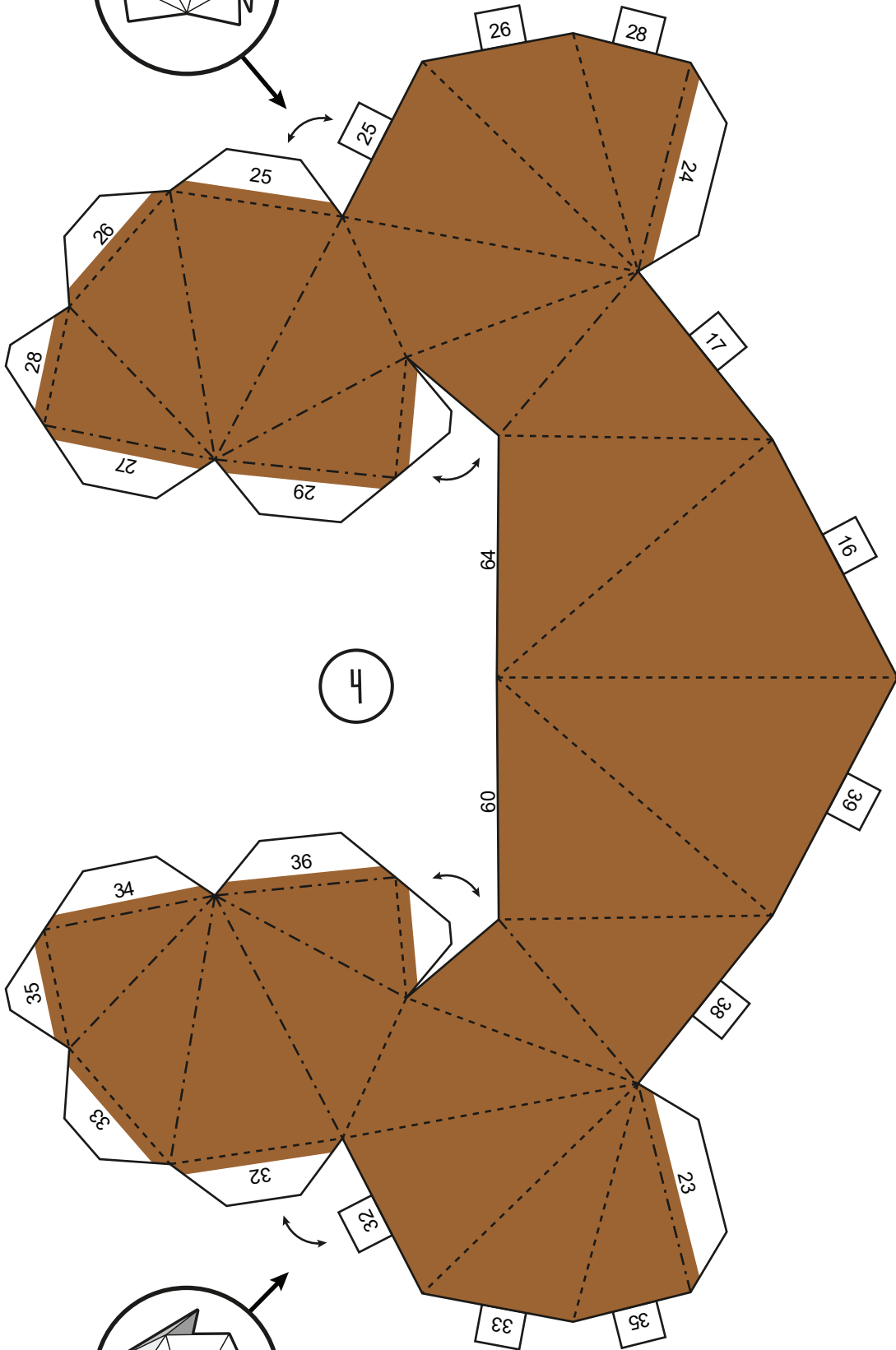
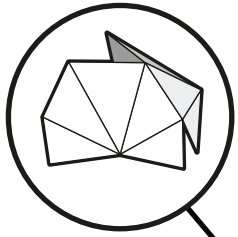




3



FOLD AND ASSEMBLE
EARS FIRST



FOLD AND ASSEMBLE
EARS FIRST

